

---

# Museum map



Chronological itinerary

---

.1.  
Ceramic  
techniques

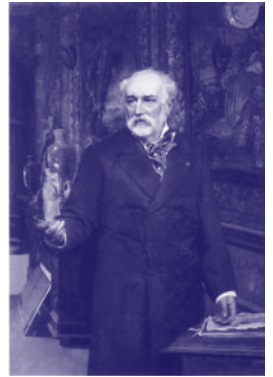
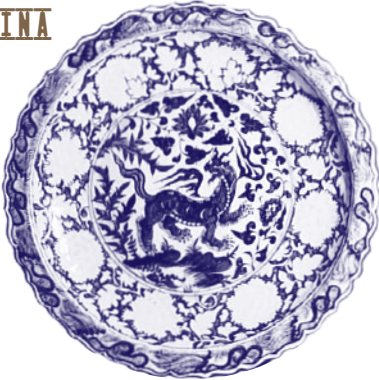


CERAMIC  
TECHNIQUES

ANTIQUITY  
MIDDLE AGES  
RENAISSANCE



CHINA



ADRIEN  
DUBOUCHÉ

XVII<sup>TH</sup>  
XVIII<sup>TH</sup>  
CENTURIES



COLOURS

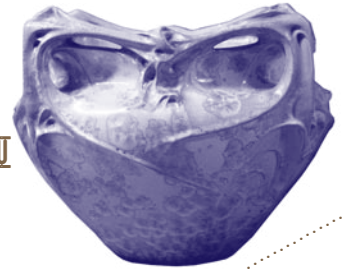


.2.  
Ceramics from Antiquity  
to the XVIII<sup>th</sup> century

.3.  
Ceramics from the  
XIX<sup>th</sup> century to the present



XIX<sup>TH</sup>  
CENTURY



ART  
NOUVEAU  
ART  
DÉCO



CONTEM<sup>±</sup>  
POARY  
CERAMICS



GLASSWARE



LIMOGES  
PORCELAIN  
XVIII<sup>TH</sup> ± XIX<sup>TH</sup> SIÈCLES

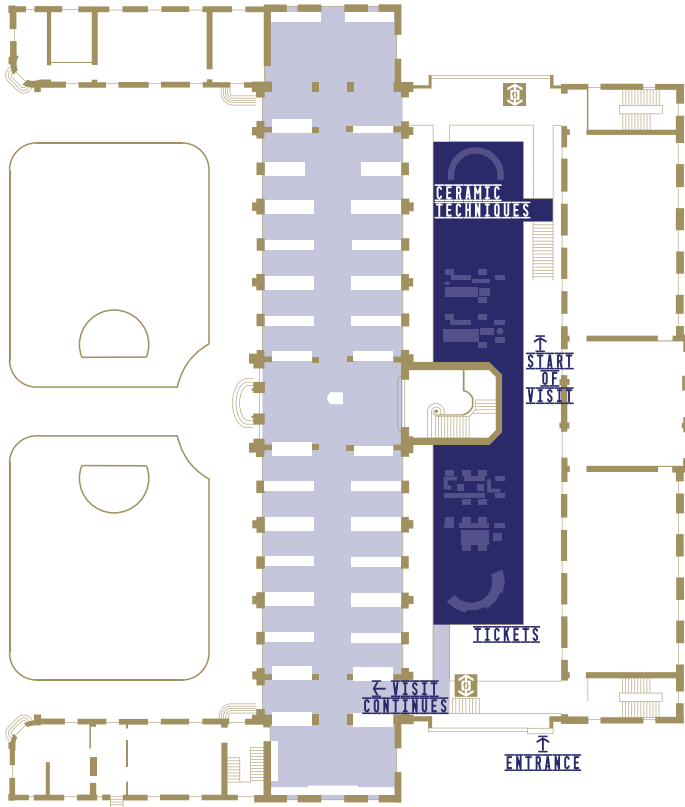
LIMOGES  
PORCELAIN  
XX<sup>TH</sup> ± XXI<sup>TH</sup> SIÈCLES



.4.  
Limoges  
porcelain

# Ceramic techniques

---



## Garden

---

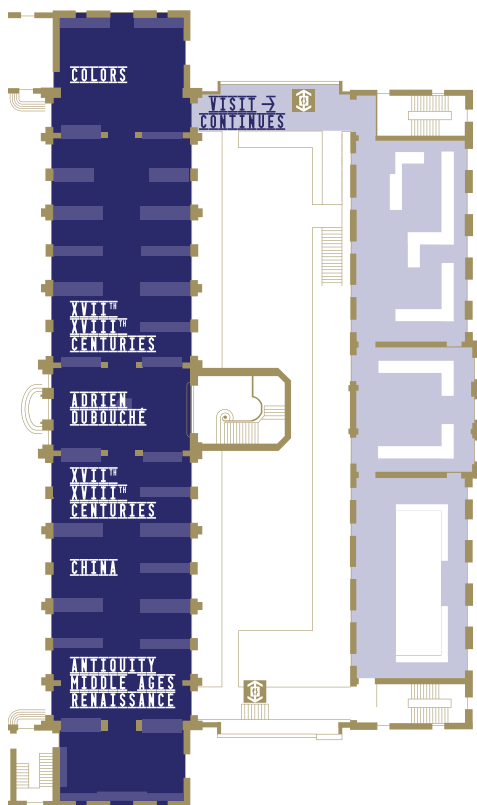
In front of the museum, *Une suite*, by Jean-Pierre Viot and Haguiko, highlights contemporary ceramic art. Commissioned by the museum in 2010, the monumental white concrete stele is covered with 600 enamelled porcelain bowls. The fountain with enigmatic porcelain heads in the garden is an artwork by Javier Perez entitled *Source*.

## Mezzanine

---

Presenting the four stages of ceramic manufacturing, the mezzanine is part of the museum's new, open and light-filled extension. Period machines, illustrating the industrial heritage of Limoges, are displayed alongside contemporary designs.

# Ceramics from Antiquity to the XVIII<sup>th</sup> century



## Level 1

The chronological presentation of the history of ceramics begins in the majestic rooms of the initial museum inaugurated in 1900. The major stages of ceramic manufacturing up to the XVIII<sup>th</sup> century are displayed in the original showcases and spectacular decors of the historical museum.

### Antiquity, Middle Ages, Renaissance

The first section presents a panorama of ceramics discovered during archaeological excavations as well as Greek pottery and medieval glazed earthenware. The second section is devoted to faience, including famous Italian Renaissance era “majolica”.

### China

For centuries, China was the only country to manufacture porcelain. This section presents key masterpieces retracing the evolution of Chinese porcelain, including the emblematic “blue and white” patterns. A selection of Japanese porcelain is also on view.

### Adrien Dubouché (opening September 2018)

Visit the old gallery to learn all about the history of the museum. Particular focus is given to Adrien Dubouché, a major sponsor and director of the museum from 1865 to 1881.

### XVII<sup>th</sup> - XVIII<sup>th</sup> centuries

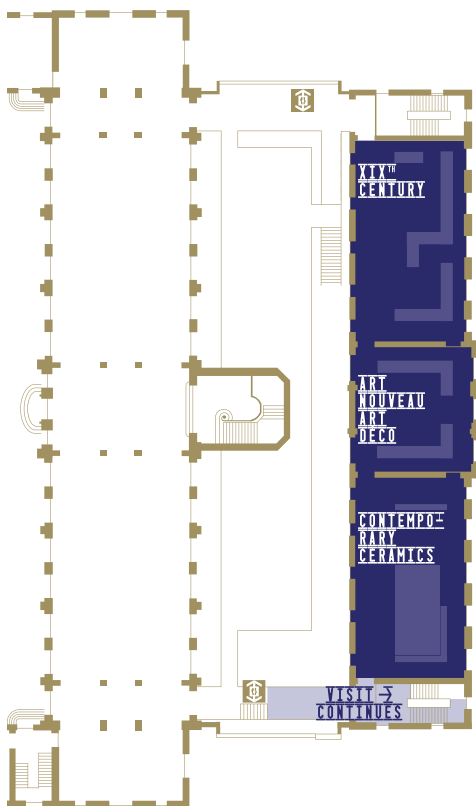
Faience, or tin-glazed earthenware, was immensely popular in Europe during this period. The major production centres are presented here, including Delft, in Holland, and Rouen, Nevers, Moustiers and Strasbourg, in France. This section shows the earliest examples of European made porcelain, which began in Germany in 1710 at the Meissen *manufacture*. They are displayed side by side with examples of what is called “soft-paste” porcelain, developed in areas where kaolin had not yet been discovered. It is only when kaolin deposits were found in the Limousin region that “hard-paste” porcelain began to be manufactured in France, as seen in the final showcases of this gallery.

### Colours (opening September 2018)

In this renovated space, explore the collections from an alternative perspective through a selection of highly colourful pieces.

# Ceramics from the XIX<sup>th</sup> century to the present

---



## Level 2

---

Adrien Dubouché also founded a school of decorative arts to train qualified artists for the porcelain industry. The school building, next to the original museum, has been incorporated into the new structure and presents the collections from the XIX<sup>th</sup> century to today in three former classrooms. In addition to the permanent displays, a series of *galeries d'étude* ("pedagogical galleries") provides additional information and insight into the history of ceramics.

### XIX<sup>th</sup> century

The museum's outstanding collection of XIX<sup>th</sup> century ceramics is based on Adrien Dubouché's own vast collection of art from this period. The chronological presentation highlights the importance of ceramics throughout the main stylistic periods of European decorative arts: Neo-Classicism, Romanticism, Orientalism, Japonism, Impressionism, etc.

---

### Art Nouveau and Art Deco

The Art Nouveau movement, which exerted a strong influence on the early XX<sup>th</sup> century, is illustrated by Hector Guimard's emblematic artworks, along with ceramics that reflect the aesthetic explorations of the period. Significant changes in terms of both shapes and patterns surfaced with the Art Deco movement, a term derived from the *Exposition Internationale des Arts Décoratifs* in 1925.

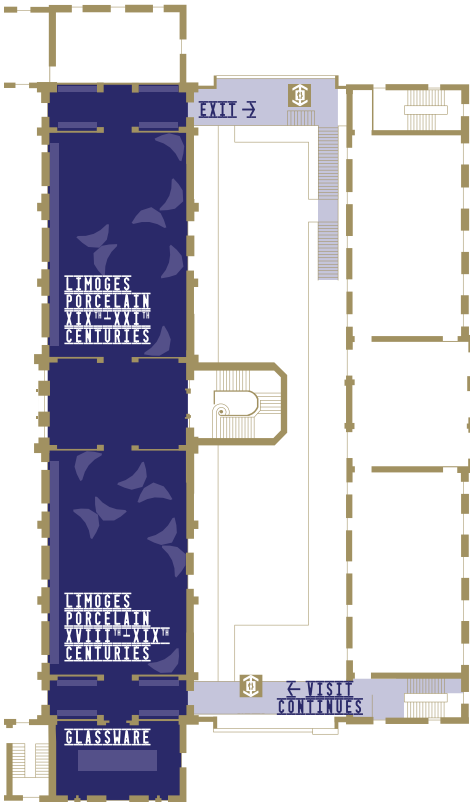
---

### Contemporary ceramics

From dishes produced by Picasso in Vallauris and the playful designs of Ettore Sottsass through to Wim Delvoye's porcelain *But de Foot* and ceramic art by Daniel de Montmollin, this room presents the rich diversity of contemporary creation. The 3D ceramics printed by Jonathan Keep also provide insight into the artistic research connecting porcelain and new technologies.

# Limoges porcelain

---



## Level 3

---

The museum's unrivalled collection of Limoges porcelain covers the entire history of the art form from the late XVIII<sup>th</sup> century to current designs. In this glass-ceilinged room bathed in light, the contemporary display cases present the exquisite pieces of this unique collection.

### Glassware

In a room whose decor has been restored to its original splendour, the main technical evolutions of glassware are presented: moulded glass from Antiquity, XVI<sup>th</sup> and XVII<sup>th</sup> century European "Venetian-style" glassware, crystal, engraved XVIII<sup>th</sup> century glass, etc.

---

### Limoges porcelain (XVIII<sup>th</sup> - XIX<sup>th</sup> century)

The first room focuses on the evolution of Limoges porcelain from 1771 – when the first *manufacture* was established – to the late XIX<sup>th</sup> century, the golden age of the porcelain industry. Distinctive masterpieces from each house are displayed, the high point being the *Grain de riz* (rice grain) service, shown in the *Salon d'honneur*, the epitome of XIX<sup>th</sup> century Limoges craftsmanship.

---

### Limoges porcelain (XX<sup>th</sup> - XXI<sup>th</sup> century)

The second room showcases the major style trends that have inspired Limoges since the early 20<sup>th</sup> century (Art Nouveau, Art Deco, design). A special place has been made for contemporary production to illustrate the vitality of Limoges porcelain: works by international artists (Arman, Jeff Koons), collaborations with the fashion world (Jean-Charles de Castelbajac, Hermès), pieces showing new culinary uses (Non Sans Raison) and experimental objects that step outside the usual bounds of tableware (CRAFT).

The Adrien Dubouché National Porcelain Museum is located in Limoges, in the heart of France's biggest centre for porcelain production.

In its fully renovated setting, the Adrien Dubouché National Porcelain Museum holds the largest collection in the world.

It also houses works representing the key stages in the history of ceramics. The museum route follows a journey through time starting from Antiquity, crossing continents and civilisations before guiding visitors towards the most recent pieces.

Everyone can marvel at the virtuosity of the masterpieces on display in an area dedicated to manufacturing techniques.

In this way, the Adrien Dubouché National Porcelain Museum and its prestigious collections contribute to the international reputation of ceramic arts and the promotion of the exceptional know-how that has made Limoges so famous.

## Visitor information

---

### Musée national Adrien Dubouché

Cité de la céramique - Sèvres & Limoges

8<sup>bis</sup>, place Winston Churchill

87000 Limoges

Tel: +33 (0)5 55 33 08 50

[www.musee-adriendubouche.fr](http://www.musee-adriendubouche.fr)

### Opening times

The museum is open every day except Tuesday, from 10.00 am to 12.30 am and from 2.00 pm to 5.45 pm.

Closed on December 25<sup>th</sup> and January 1<sup>st</sup>.

The museum is accessible to visitors with disabilities.

### Directions

Bus: n°6 or n°8

Charged parking area for 600 cars in front of the museum and at nearby underground car parks located on the Place d'Aine and Place de la Motte.

### Library and documentation centre

The documentation centre has a large collection of literature on the museum collections, ceramic artists and the *manufactures*. Admission free, by appointment only.

### Bookshop and gift shop

The gift and book shop stocks publications on ceramic arts, postcards, Limoges porcelain table services, jewellery and more.

Tel: +33 (0)5 55 33 08 55

